

CORNER CONDITIONS

GC4100 - OUTSIDE CORNER

GC4200 - INSIDE CORNER

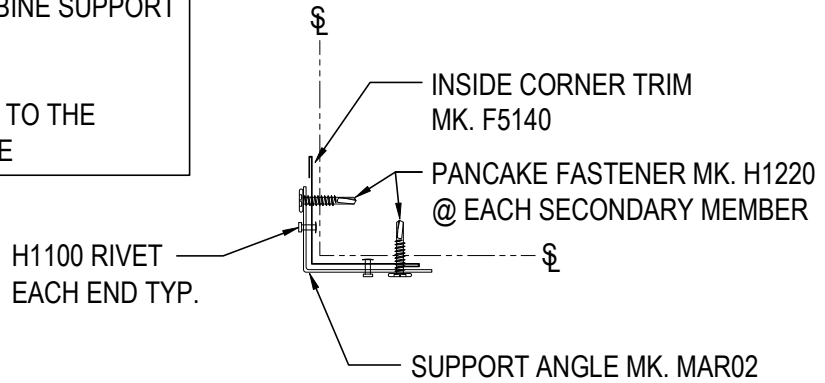
GC4300 - PANEL TERMINATION AT MASONRY / EXISTING WALL

GC4100 - OUTSIDE CORNER

[Download the DWG file by clicking here.](#)

PRIOR TO PANEL ATTACHMENT, COMBINE SUPPORT ANGLE AND INSIDE CORNER TRIM.

THEN ATTACH THE COMBINED PARTS TO THE SECONDARY MEMBERS AT STEEL LINE



| PANEL THICKNESS | OUTSIDE TRIM |
|-----------------|--------------|
| 2" | F5102 |
| 2.5" | F5103 |
| 3" | F5104 |
| 4" | F5101 |

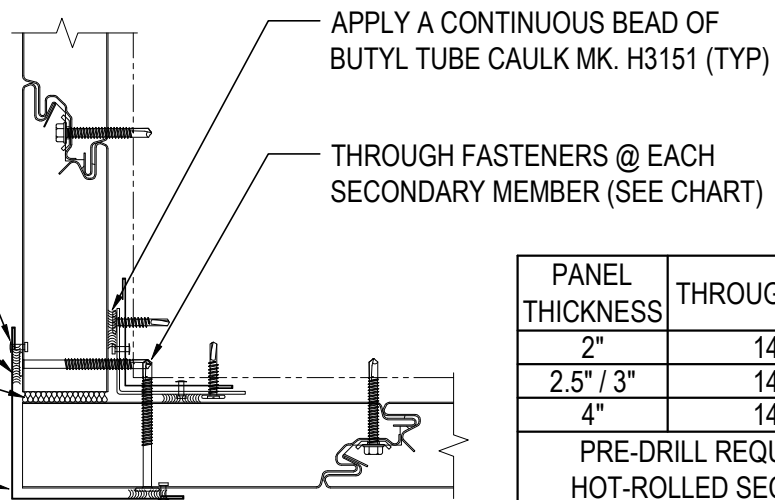
H1100 RIVET @ 8" O.C.

MK. 14 RIVET @ 8" O.C. REQ'D w/ TUFF COATED PANELS

APPLY A CONTINUOUS BEAD OF BUTYL TUBE CAULK MK. H3151 (TYP)

FILL VOID WITH SPRAY IN PLACE INSULATION (NOT BY MBS)

OUTSIDE CORNER TRIM MK. F510_ (SEE CHART)



| PANEL THICKNESS | THROUGH FASTENER |
|--|------------------|
| 2" | 1424PNC |
| 2.5" / 3" | 1432PNC |
| 4" | 1440PNC |
| PRE-DRILL REQUIRED AT HOT-ROLLED SECONDARY | |

OUTSIDE CORNER

INSULATED METAL PANEL OUTSIDE CORNER

GC4100

Detailer Notes:

- 1) N/A

GC4200 - INSIDE CORNER

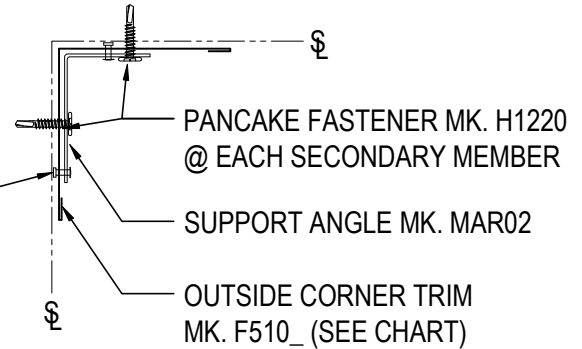
[Download the DWG file by clicking here.](#)

PRIOR TO PANEL ATTACHMENT, COMBINE SUPPORT ANGLE AND OUTSIDE CORNER TRIM.

THEN ATTACH THE COMBINED PARTS TO THE SECONDARY MEMBERS AT STEEL LINE

| PANEL THICKNESS | OUTSIDE TRIM |
|-----------------|--------------|
| 2" | F5102 |
| 2.5" | F5103 |
| 3" | F5104 |
| 4" | F5101 |

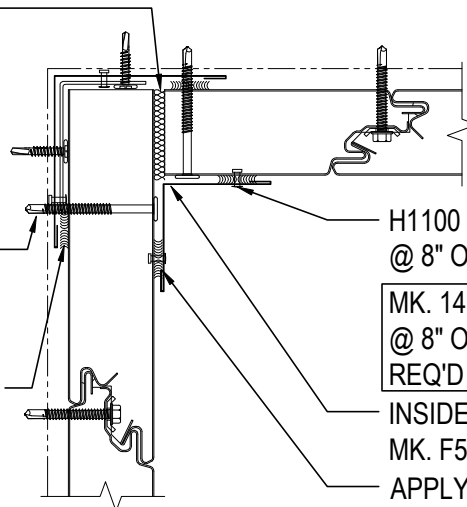
H1100 RIVET
EACH END TYP.



FILL VOID WITH SPRAY IN PLACE INSULATION (NOT BY MBS)

THROUGH FASTENERS @ EACH SECONDARY MEMBER (SEE CHART)

APPLY A CONTINUOUS BEAD OF BUTYL TUBE CAULK MK. H3151 (TYP)



| PANEL THICKNESS | THROUGH FASTENER |
|--|------------------|
| 2" | 1424PNC |
| 2.5" / 3" | 1432PNC |
| 4" | 1440PNC |
| PRE-DRILL REQUIRED AT HOT-ROLLED SECONDARY | |

INSIDE CORNER

INSULATED METAL PANEL INSIDE CORNER

GC4200

Detailer Notes:

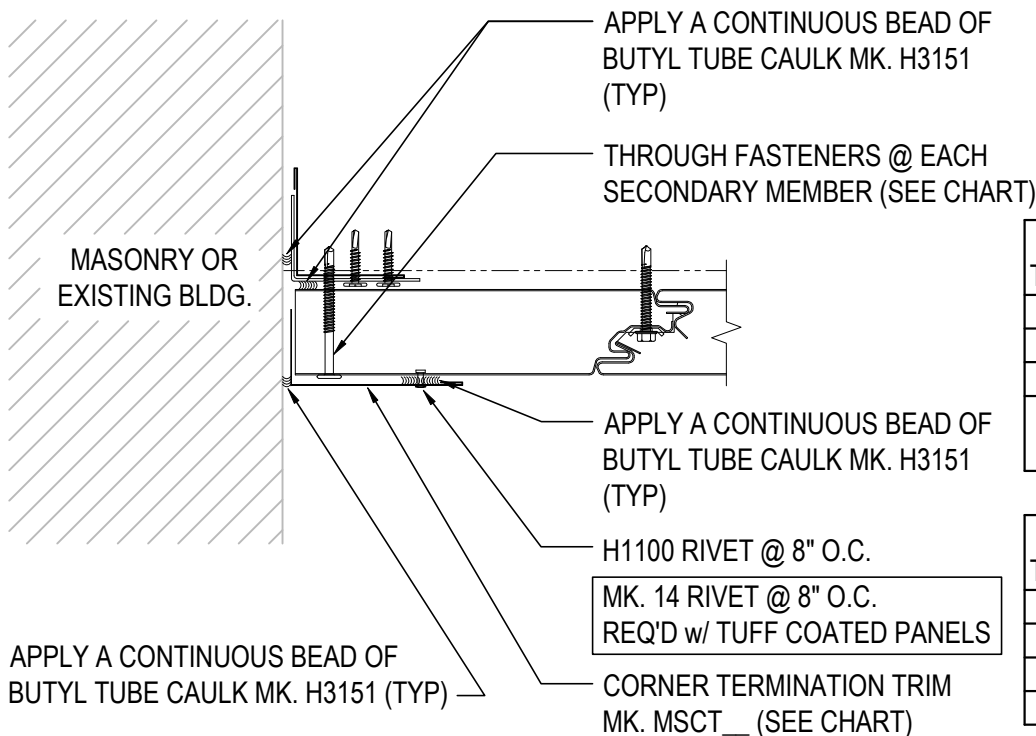
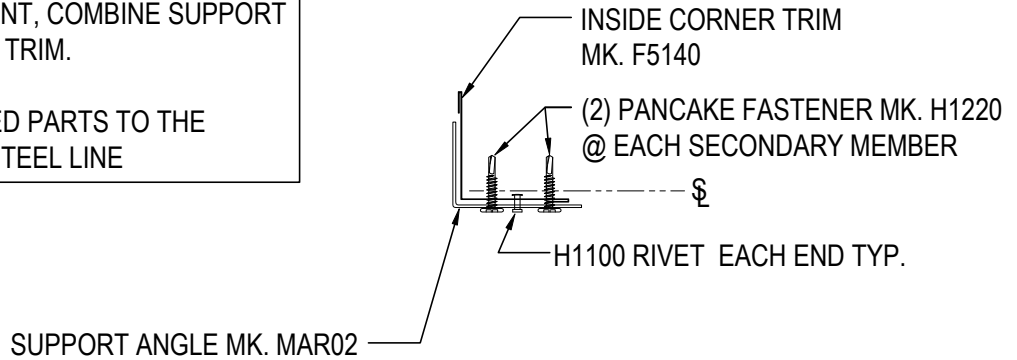
- 1) N/A

GC4300 - PANEL TERMINATION AT MASONRY / EXISTING WALL

[Download the DWG file by clicking here.](#)

PRIOR TO PANEL ATTACHMENT, COMBINE SUPPORT ANGLE AND INSIDE CORNER TRIM.

THEN ATTACH THE COMBINED PARTS TO THE SECONDARY MEMBERS AT STEEL LINE



| PANEL THICKNESS | THROUGH FASTENER |
|--|------------------|
| 2" | 1424PNC |
| 2.5" / 3" | 1432PNC |
| 4" | 1440PNC |
| PRE-DRILL REQUIRED AT HOT-ROLLED SECONDARY | |

| PANEL THICKNESS | TERMINATION TRIM |
|-----------------|------------------|
| 2" | MSCT20 |
| 2.5" | MSCT25 |
| 3" | MSCT30 |
| 4" | MSCT40 |

PANEL TERMINATION AT MASONRY OR EXISTING BLDG.

INSULATED METAL PANEL TERMINATION

GC4300

Detailer Notes:

1) N/A